

### 9RU High Density Modular Unit

*Available configurations up  
to 432 channels*

#### Key Features:

- Standard 19in rack mountable with 23in mounting ears available
- Standard color schemes: Black with white lettering or white with black lettering
- Available with pre-terminated arrays to save time and money during installation.
- Optional colors are available for the adapter housings on the front of each panel.



#### *Product Description*

Our 9RU fiber optic coupling facility is one of the industries most flexible and robust connectivity products. Our design allows you to couple existing standard fiber optic cables as well as new modular MTP and MPO ribbon array assemblies simultaneously. Available options:

- Modular Cassettes
- Front or rear entry
- Pre-loaded arrays

You can also mix multiple colors and types of connector interfaces (couplers & adapters) in our enclosure at the same time.

This 9RU enclosure has an extremely high capacity that is scaleable up to 864 fibers (432 channels). Permanent silk screen labeling is standard on our enclosures and custom silk screening is available.

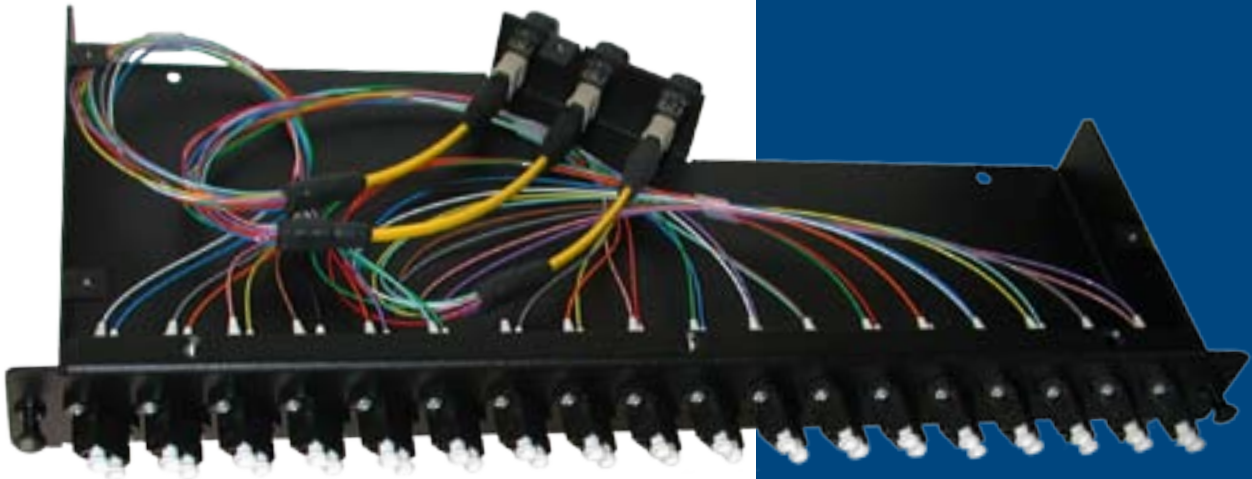
Couplers are available with Metal (Phosphorous Bronze) alignment sleeves or Ceramic (Zirconia) alignment sleeves.

Contact Customer Service for configuration assistance.



### Typical Applications

- Server Cabinets for SAN Storage Area Network Environment
- Used in any rack or cabinet where space is limited
- In zone areas for applications such as Tape, DASD and Server connectivity
- Inside vendor active equipment cabinets to provide cleaner and flexible cable management



Rear Entry Cassette

### Dimensions

Height: 15.75"  
Color: Black or White  
Dimensions: 19"W x 5.5"D  
Available Configurations: up to 432 channels

### Standard Options

- Cable management shelf and protective door
- Available with cassettes or hinged fixed plate

### Fiber Capacity

Plate Density	Adapter Options	Max Fiber Count
12 rows of 18	SC SMPLX, LC DPLX, MTRJ, MU DPLX, SC DPLX, LC QUAD	864 (432 Channel)

\* Additional adapter configurations available



ISO 9001:2000 Registered Firm



Optical Interconnect • 14850 Venture Drive, Dallas, TX 75234  
phone 214.239.3988 • fax 972.331.3410  
sales@opticalinterconnect.com